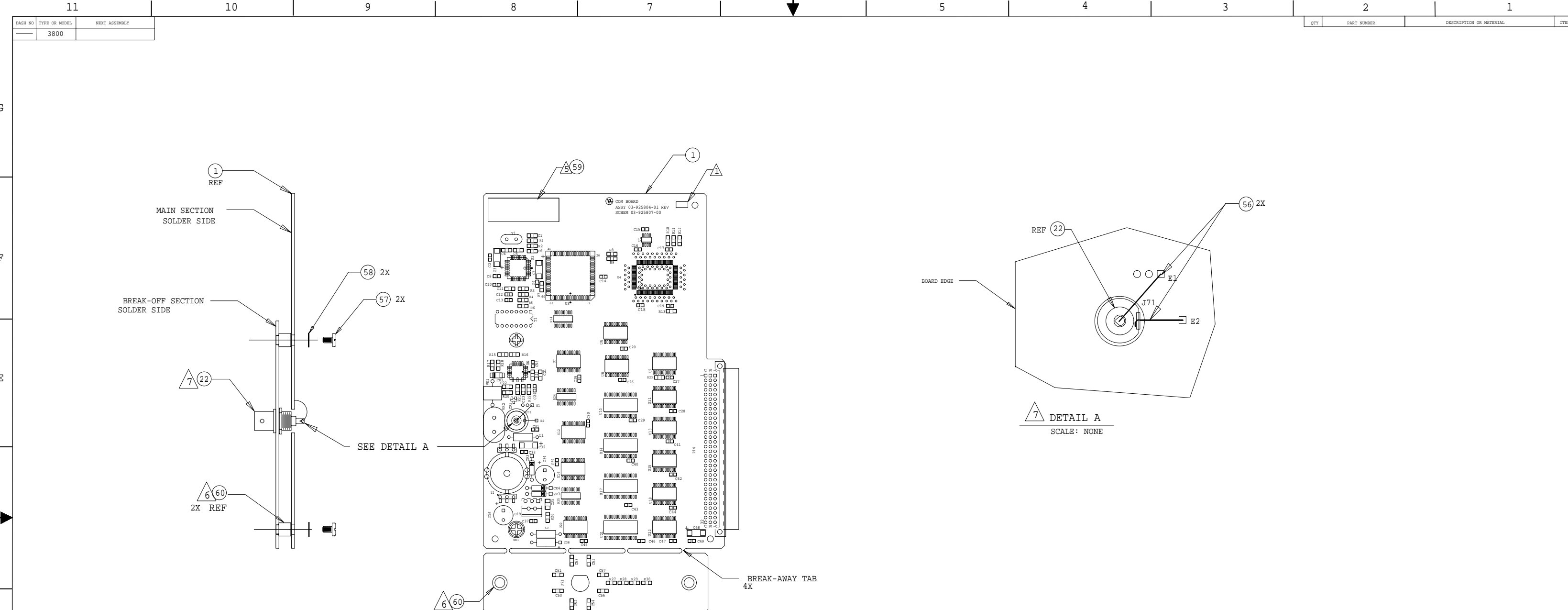


| | | |
|---------|---------------|---------------|
| DASH NO | TYPE OR MODEL | NEXT ASSEMBLY |
| | 3800 | |

| | | | |
|-----|-------------|-------------------------|-----|
| QTY | PART NUMBER | DESCRIPTION OR MATERIAL | REV |
|-----|-------------|-------------------------|-----|



8 PROGRAM BOARD WITH ETHERNET ADDRESS PER PROCEDURE SPECIFIED IN 03-925804-20.

- 7 RECOMMENDED BNC CONNECTOR INSTALLATION PROCEDURE:
- AFTER FLOW SOLDER AND AFTER IN-CIRCUIT TEST, INSTALL AND SOLDER APPROX 2 INCHES BARE WIRE (ITEM 56) LOOP BETWEEN SQUARE PADS MARKED E1 AND E2. AFTER SOLDERING, CUT LOOP AT MIDDLE TO FORM TWO PIG TAILS.
 - BREAK OFF END OF BOARD AT BREAK-AWAY TABS. INSTALL BNC CONNECTOR FROM SOLDER SIDE, THRU D-HOLE WITH NUT ON COMPONENT SIDE OF BREAK-OFF SECTION. PLACE BREAK-OFF SECTION ON SOLDER SIDE OF MAIN SECTION CAREFULLY MAKING SURE THAT THE BNC CONNECTOR GOES THRU THE .500 INCH HOLE ON THE MAIN SECTION WITHOUT DAMAGE, SECURE THE TWO SECTIONS WITH TWO SCREWS (ITEM 57) AND TWO WASHERS (ITEM 58) FROM COMPONENT SIDE OF MAIN SECTION.
 - AFTER TRIMMING FOR MINIMUM LENGTH, SOLDER PIG TAIL ATTACHED AT E1, TO CENTER PIN OF BNC CONNECTOR; REPEAT PROCESS CONNECTING PIGTAIL AT E2 TO SHIELD TERMINAL OF BNC CONNECTOR. JUMPER PIG TAIL FROM E1 MUST BE FORMED SO THAT IT CANNOT BE MADE TO SHORT OUT BNC CONNECTOR OR TOUCH PIG TAIL JUMPER FROM E2. SEE DETAIL A.

6 INSTALL STANDOFF, (ITEM 60), TO COMPONENT SIDE OF BREAK-OFF SECTION, TWO PLACES. STANDOFF THREADS MUST BE KEPT CLEAR OF SOLDER, BOTH ENDS.

5 APPLY LABEL, ITEM 59, TO UPPER LEFT CORNER, OF COMPONENT SIDE OF BOARD AS SHOWN.

4. FOR SCHEMATIC SEE 03-925807-00.

3. FOR FAB. DRAWING SEE 03-925805-00, FOR FAB. PART SEE 03-925805-01.

2. FOR A/W SEE 03-925806-00.

1 MARK CURRENT REV LEVEL IN AREA PROVIDED WITH A PERMANENT TYPE, NON-CONDUCTIVE BLACK INK.

NOTES: (UNLESS OTHERWISE SPECIFIED)

SHT 1 OF 3

SHT 2 AND 3 ARE -A- SIZE

DO NOT SCALE DRAWING

| | | | | | | |
|-----------------------|-----------|--------------------------|--------------------------|---|--------------------------|------------------------------|
| DESCRIPTION OF CHANGE | C RELEASE | NUMEROUS CHANGES SEE ECO | NUMEROUS CHANGES SEE ECO | ITEM 53 WAS 130V 66-299000-00 B RELEASE | NUMEROUS CHANGES SEE ECO | ADD NOTE 8 WAS IN ECO #20193 |
| APVD | | M155 | M168 | M179 | 20193 | NFC |
| ECO | | | | | | |
| DFT | SAM | SAM | ST | ST | ST | ST |
| CHK | ST | ST | ST | ST | ST | ST |
| DATE | 6-4-96 | 6-28-96 | 8-1-96 | 10-18-96 | 5-7-97 | 8-10-97 |
| REV | C1 | C2 | C3 | 1 | 2 | 2 |

| | | | | |
|--------------------------|-----------------|------------------------------------|------------------|----------------|
| X3-925804-01 | REFURBISHED | | | |
| 03-925804-01 | NEW | | | |
| 03-925804-00 | DRAWING ONLY | | | |
| PART NUMBER | DESCRIPTION | | | |
| DRAWN S. McRAE | DATE 2-23-96 | APPROVED T. GARRETT F. FALLI | DATE 6-4-96 | CODE |
| CHECKED ST | DATE 6-4-96 | APPROVED T. GARRETT E. KLEE | DATE 10-18-96 | CLASS |
| ASSY, PWA, COM BD | | | | |
| NOT OTHERWISE SPEC: ANG± | | | | |
| varian | | | | |
| FIN. ✓ | DEC .X ± | .XX ± | .XXX ± | |
| FULL | 38 | 1 OF 3 | D | 03-925804-00 2 |
| SCALE | DIV | SHEET | SIZE | DRAWING NO |

PWA: COM
ASSEMBLY: 03-925804-01
DATE: 5-May-1997
REV: 2

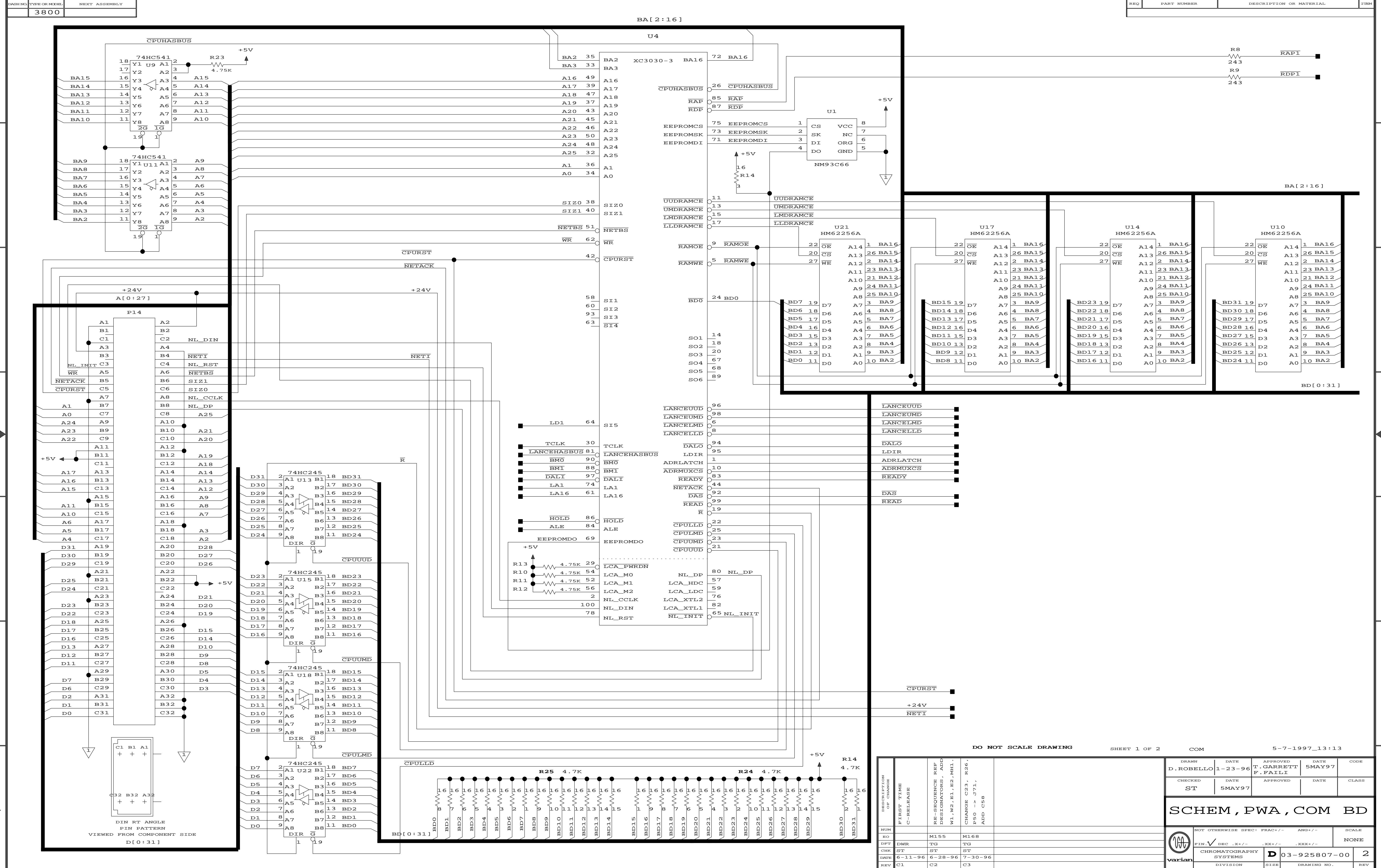
Sheet: 2 of 3

| <u>Item</u> | <u>Ref Designator</u> | <u>Qty</u> | <u>Part Number</u> | <u>Part Description</u> |
|-------------|---|------------|--------------------|---------------------------------|
| 1 | | 1 | 03-925805-01 | FAB,PWA,COM |
| 2 | C1 | 1 | 41-715109-00 | CAP,CHIP,680PF,100V,5%,CER,NPO |
| 3 | C2, C8-10, C12-20, C24-31, C33, C37, C39-47, C49, C58 | 34 | 41-803000-00 | CAP,CHIP,0.1UF,50V,20%,CER |
| 4 | C3, C7, C32 | 3 | 41-304309-00 | CAP,CHIP,4.7UF,35V,20%,TA |
| 5 | C4-5 | 2 | 41-715095-00 | CAP,CHIP,100PF,100V,10%,CER,COG |
| 6 | C6 | 1 | 41-715106-00 | CAP,CHIP,22PF,100V,5%,CER,NPO |
| 7 | | | | |
| 8 | C11 | 1 | 41-801303-00 | CAP,CHIP,4700PF,50V,5%,CER,NPO |
| 9 | C21 | 1 | 41-801424-00 | CAP,CHIP,39PF,100V,5%,CER,NPO |
| 10 | C22 | 1 | 41-801413-00 | CAP,CHIP,150PF,100V,5%,CER,NPO |
| 11 | C23 | 1 | 41-715145-00 | CAP,CHIP,1.0PF,100V,5%,CER,NPO |
| 12 | C38 | 1 | 41-709004-00 | CAP,2.2UF,50V,20%,TA |
| 13 | C34 | 1 | 41-503904-00 | CAP,220UF,35V,20%,AL.ELECT |
| 14 | C35 | 1 | 41-801701-00 | CAP,CHIP,0.01UF,100V,5%,CER |
| 15 | C36 | 1 | 41-505838-00 | CAP,100UF,50V,20%,AL.ELECT. |
| 16 | C48 | 1 | 41-304310-00 | CAP,CHIP,47UF,20V,20%,TA |
| 17 | C50-57 | 8 | 41-803906-00 | CAP,CHIP,1000PF,1KV,5%,CER,NPO |
| 18 | CR1 | 1 | 66-999964-00 | DIODE,CHIP,1N4002,100V,1A |
| 19 | CR2 | 1 | 66-999972-00 | DIODE,1N914,100V,100MA,SMT |
| 20 | CR3-4 | 2 | 66-393207-00 | DIODE,MUR110,100V,1A,FAST_REC. |
| 21 | | | | |
| 22 | J71 | 1 | 99-500015-00 | CONN,BNC,BULKHEAD |
| 23 | L1-2 | 2 | 43-299819-00 | INDUCTOR,12UH,305MA,RF_CHOKE |
| 24 | | | | |
| 25 | P14 | 1 | 51-406024-00 | CON,96P,RT,DINTYPR,AMP650461-5 |
| 26 | R1, R7 | 2 | 31-403259-00 | RES,CHIP,4.75K,1/8W,1%,100PPM |
| 27 | R2 | 1 | 31-403185-00 | RES,CHIP,511,1/8W,1%,100PPM |
| 28 | R3-6, R15, R17 | 6 | 31-403079-00 | RES,CHIP,40.2,1/8W,1%,100PPM |
| 29 | R8-9 | 2 | 31-403154-00 | RES,CHIP,243,1/8W,1%,100PPM |
| 30 | R10-13, R23 | 5 | 31-403278-00 | RES,CHIP,4.75K,1/8W,1%,100PPM |
| 31 | R14, R24-25 | 3 | 35-790007-00 | RES,NET,SMT,15X4700,2% |
| 32 | R16 | 1 | 31-403140-00 | RES,CHIP,174,1/8W,1%,100PPM |

PWA: COM
ASSEMBLY: 03-925804-01
DATE: 5-May-1997
REV: 2

Sheet: 3 of 3

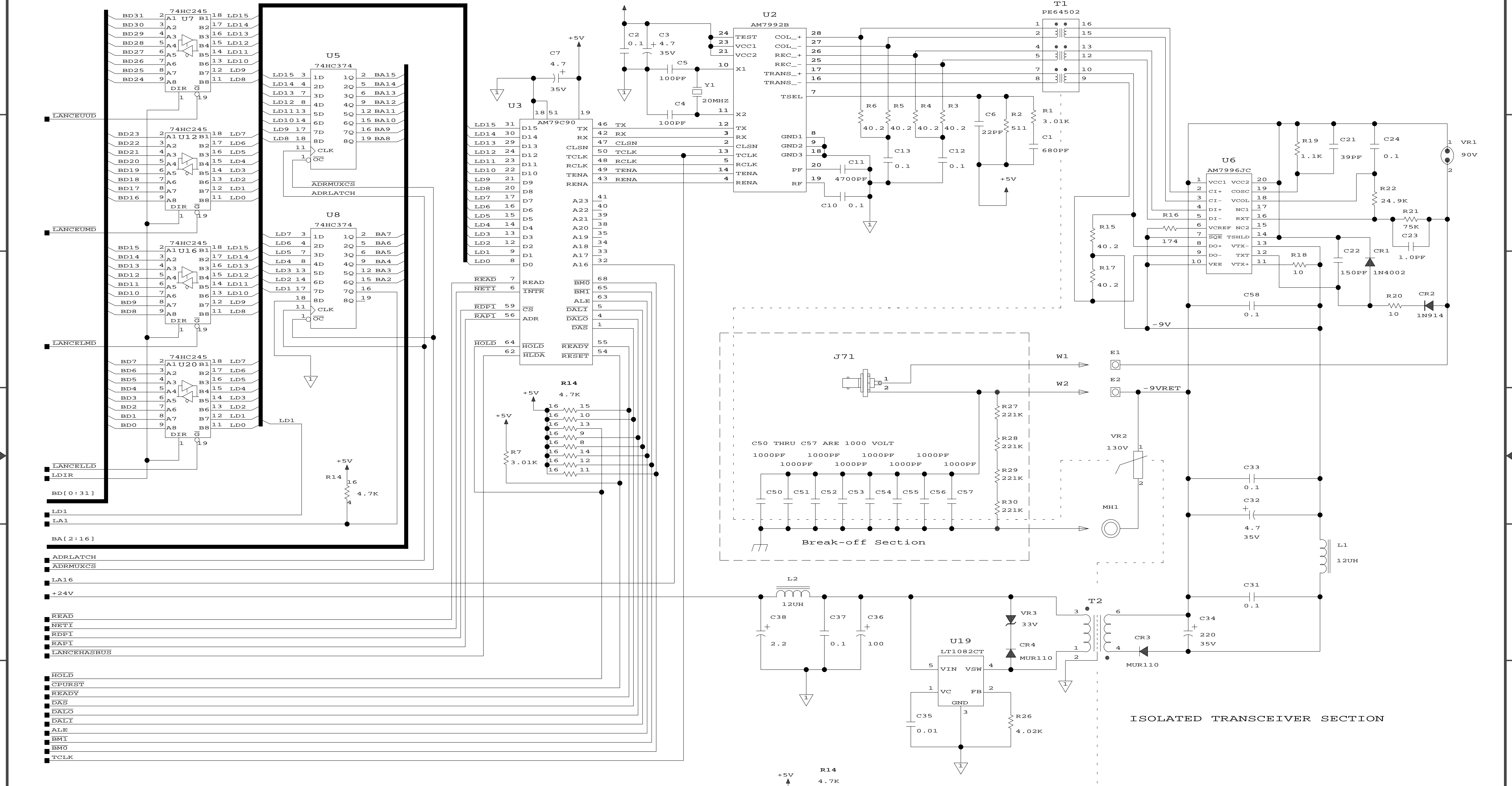
| <u>Item</u> | <u>Ref Designator</u> | <u>Qty</u> | <u>Part Number</u> | <u>Part Description</u> |
|-------------|--------------------------------------|------------|--------------------|----------------------------------|
| 33 | R18, R20 | 2 | 31-403021-00 | RES,CHIP,10,1/8W,1%,100PPM |
| 34 | R19 | 1 | 31-403217-00 | RES,CHIP,1.1K,1/8W,1%,100PPM |
| 35 | R21 | 1 | 31-403393-00 | RES,CHIP,75K,1/8W,1%,100PPM |
| 36 | R22 | 1 | 31-403347-00 | RES,CHIP,24.9K,1/8W,1%,100PPM |
| 37 | | | | |
| 38 | R26 | 1 | 31-403271-00 | RES,CHIP,4.02K,1/8W,1%,100PPM |
| 39 | R27-30 | 4 | 31-403438-00 | RES,CHIP,221K,1/8W,1%,100PPM |
| 40 | T1 | 1 | 44-799908-00 | ISOLATION_TRANS_ENET,PE-64502 |
| 41 | T2 | 1 | 03-925464-00 | TRANSFORMER |
| 42 | U1 | 1 | 62-602961-00 | IC,NM93C66M8,EEPROM,2K,NATIONAL |
| 43 | U2 | 1 | 62-603443-00 | AM7992B |
| 44 | U3 | 1 | 62-603442-00 | I.C.ETHERNET_CONTROLLER,79C90JC |
| 45 | U4 | 1 | 62-603221-00 | IC,ATT3030-100J100C,FPGA,ATT |
| 46 | U5, U8 | 2 | 62-603438-00 | IC,74HC374 |
| 47 | U6 | 1 | 62-603444-00 | IC,AM7996JC |
| 48 | U7, U12-13, U15-16, U18, U20, U22 | 8 | 62-603225-00 | IC,74HC245WM |
| 49 | U9, U11 | 2 | 62-603226-00 | IC,74HC541WM |
| 50 | U10, U14, U17, U21 | 4 | 62-603228-00 | IC,HM62256AFP-10T,RAM,32KX8 |
| 51 | U19 | 1 | 62-603460-00 | IC,LT1082CT,SWITCHING_REG |
| 52 | VR1 | 1 | 55-500163-00 | SUPPR,SPARKGAP,GAS |
| 53 | VR2 | 1 | 55-400206-00 | SUPPR,MOV,575V |
| 54 | VR3 | 1 | 66-314752-00 | DIODE,1N4752A,ZENER,33V,5%,1WATT |
| 55 | Y1 | 1 | 66-472013-00 | XTAL,20.000MHZ |
| 56 | | A/R | 81-099924-00 | JUMPER,WIRE,BARE |
| 57 | | 2 | 12-222006-03 | SCREW,#6 |
| 58 | | 2 | 14-312006-00 | WASHER,EXTLOCK,#6 |
| 59 | | 1 | 03-925531-01 | LABEL,ETHERNET_ADDRESS |
| 60 | | 2 | 22-419618-00 | STDOFF,CLN,1/4 |



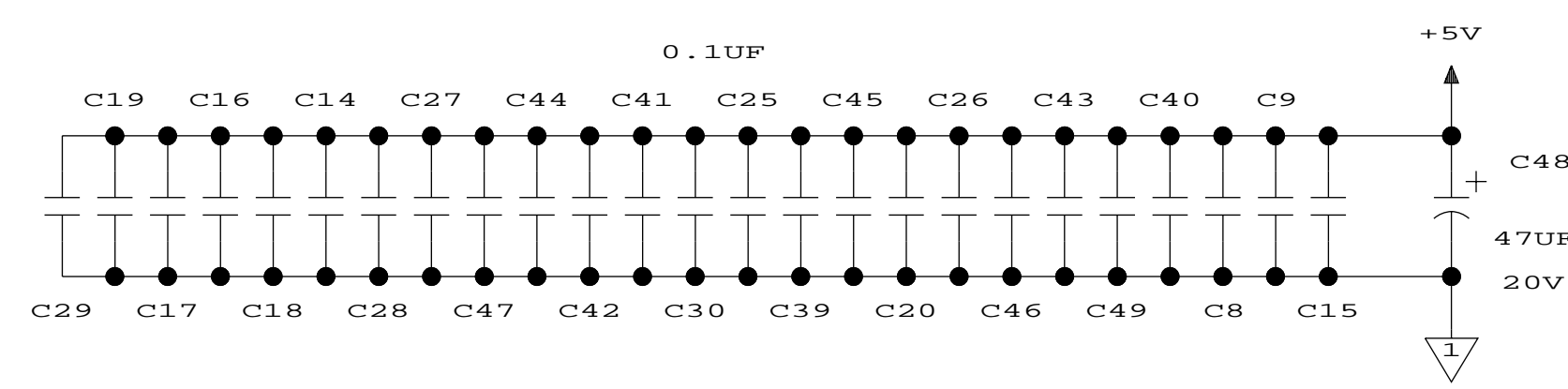
DO NOT SCALE DRAWING SHEET 1 OF 2 COM 5-7-1997_13:13

| | | | | |
|---|---------|------------|---------|-------|
| DESCRIPTION OF CHANGE | DATE | APPROVED | DATE | CODE |
| FIRST TIME C-RELEASE | 1-23-96 | T. GARRETT | 5MAY97 | |
| RE-SEQUENCE REF DESIGNATORS, ADD W1, W2, E1, E2, M1, M2 | 5MAY97 | F. FALLI | | |
| CHANGE C23, R26, P50 -> J71, ADD C58 | | | | |
| NUM | DATE | APPROVED | DATE | CLASS |
| EO | M155 | M168 | | |
| DFT | DWR | TG | TG | |
| CHK | ST | ST | ST | |
| ENR | 6-11-96 | 6-28-96 | 7-30-96 | |
| REV | C1 | C2 | C3 | |

| | | |
|------------------------------------|----------------|-------------|
| SCHEM, PWA, COM BD | | SCALE |
| NOT OTHERWISE SPECI PRAC+/- ANG+/- | | NONE |
| FIN ✓ DEC .X+/- .XX+/- .XXX+/- | | |
| CHROMATOGRAPHY SYSTEMS | D 03-925807-00 | 2 |
| DIVISION | SIZE | DRAWING NO. |



5. FOR A/W SEE 03-925806-00
 4. FOR FAB SEE DRAWING 03-925805-00, PART 03-925805-01
 3. FOR ASSY. SEE DRAWING 03-925804-00, PART 03-925804-01
 2. ALL CAPS'S ARE IN UF, 50V
 1. ALL RES'S ARE IN OHMS,MF,1/4W,1%,100PPM
- NOTES: (UNLESS OTHERWISE SPECIFIED)



DO NOT SCALE DRAWING SHEET 2 OF 2 COM 5-7-1997_13:13

| | | | | | | | | | |
|---------------------------|---------------------|------|---------|----------|-------------|----------------|--------|-------|--|
| DRWN | D. ROBELLO | DATE | 1-23-96 | APPROVED | T. GARRETT | DATE | 5MAY97 | CODE | |
| CHEK | ST | DATE | 5MAY97 | APPROVED | F. FALLI | DATE | | CLASS | |
| SCHEM, PWA, COM BD | | | | | | | | | |
| NUM | NOT OTHERWISE SPECI | | | FRAC+/- | ANG+/- | SCALE | | | |
| EO | FIN ✓ DEC .X+/- | | | .XX+/- | .XXX+/- | NONE | | | |
| DFT | CHROMATOGRAPHY | | | SYSTEMS | | D 03-925807-00 | | 2 | |
| CHK | DIVISION | | | SIZE | DRAWING NO. | | REV | | |
| EMR | | | | | | | | | |
| REV | | | | | | | | | |